

IVECO

Drive the road of change



Accessories Catalogue.

IVECO  -WAY



04
Drive in style.

14
Distinctive visibility.

32
Always safe & efficient.

48
A world of technology
and connectivity.

52
Living comfort.

IVECO S-WAY.

Drive the new way.

IVECO S-WAY provides a complete transport solution designed to enhance the driver's life on board and enable the owners to operate efficiently, profitably and sustainably.

Set to become a favourite of drivers, and their home away from home, the IVECO S-WAY cab raises the working and living experience, providing a spacious and well laid out environment rich in comfort features and advanced functionalities.

IVECO S-WAY delivers outstanding fuel efficiency and sustainability, together with low Total Cost of Ownership, with its advanced technologies and innovative services.

A 100% connected truck, IVECO S-WAY ushers in a new era of proactive and predictive support.

In line with this new way of working and driving, IVECO offers a new generation of specifically developed accessories, that customize and maximize your personal experience with your NEW IVECO S-WAY.

Depending on your personality, you can build your unique IVECO S-WAY by choosing to enhance its style with a wide range of high-quality chromed details, with the new LED backlighting logo.

Active and passive additional safety and security systems help you to better protect your precious vehicle and its load, while hi-tech accessories really bring the future on board.

Last but not least, you can decide the level of comfort of your Brand New IVECO S-WAY through a comprehensive series of accessories, as for example a pretty new entertainment system, developed to make your life on board as productive and comfortable as possible.

With IVECO S-WAY, drivers and owners will DRIVE THE NEW WAY.

Drive in style.







Style meets performance.

Every single detail has been carefully designed to highlight its predominant character maximizing aerodynamic performances. High-quality materials and accurate testing allow easy mounting operations.

1 Mirror covers. Lightweight ABS plastic covers protecting the mirrors and enhancing the design. The kit includes 2 pieces (left and right mirror covers).

2 Matt chromed grid.

Material: Chromed Lightweight ABS add-on covers.

The kit contains:

- 5 covers

3 Matt chromed styling kit.

Material: Stainless steel.

The kit contains:

- 2 bumper inlay stickers
- 2 underwindow stickers
- 2 sidefairs inlay stickers

4 Inox laser grid. Grid mustache made of satin stainless steel.

Material: Satin stainless steel.

- Quick and easy installation
- Waterproof IP68
- Impact resistant
- Resistant to washing/UV

5 Optic fiber chromed / black grid. Fiber Optic kit for the exterior of the vehicle.

Material: ABS.

- More than (1 million) color combinations
- Led function to the rhythm of the surrounding sound
- Intensity regulator
- Waterproof IP68
- Impact resistant
- Resistant to washing/UV

	PN	Description
1	500051761	Chromed mirror covers.
	500049916	Primered mirror covers.
2	500051764	Matt chromed grid.
3	500051763	Matt chromed styling kit.
4	500052015	Inox laser grid.
	500052016	Optic fiber chromed grid
5	500052040	Optic fiber black grid



Style meets performance.

1 Tuning kit

Material: Stainless steel high gloss polished.

The kit contains:

- 2 door handles
- 5 grid inlays
- 2 mirror inlays

2 Customised IVECO laser wheel hub cover.

3 Stainless steel black painted customised IVECO mirror effect hub cover.

4 Wheel hub cover with logo. Designed to give maximum protection to your wheel hub emphasizing style thanks to IVECO logo, diameter 22.5" - 10 holes. Not compatible with TPMS.

5 Front wheel hub cover.

6 Wheel hub covers.

- Designed to give maximum protection to your wheel hub
- Diameter 22.5" - 10 holes

7 Stainless steel wheel hub cover with central hole.

PN	Description
1 500049918	Tuning kit.
500050354	Stainless steel 10 hole wheel hub cover with 26 mm cup bracket. IVECO laser customisation.
2 500050355	Stainless steel wheel hub cover with 32 cup bracket IVECO laser customisation.
500050357	Stainless steel black painted 10 hole wheel hub cover with 26 mm cup bracket. IVECO mirror effect customisation.
3 500050358	Stainless steel black painted 10 hole wheel hub cover with 32 mm cup bracket. IVECO mirror effect customisation.
4 500025726	1 rear steel wheel hub cover.
93162440	26 mm front wheel hub cover.
5 500050361	32 mm front wheel hub cover.
500051782	1 stainless steel front hub cover.
6 500051783	1 stainless steel rear hub cover.
500050344	Stainless steel wheel hub cover with 24.93 mm hole, 26 mm cup bracket.
7 500050353	Stainless steel wheel hub cover with 24.93 mm hole, 32 mm cup bracket.



1



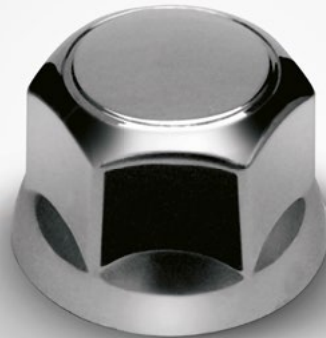
2



3



4



5



6

Style meets performance.

1 Black stainless steel wheel nut cover.

2 3 4 Wheel nut covers.

- Designed to give maximum protection to your wheel nuts
- Diameter 32" - pack of 10 pieces

5 Wheel nut covers.

- Designed to give maximum protection to your wheel nuts
- Diameter 32" - pack of 20 pieces

6 Wheel trims. The wheel trims bring style and smartness to movement, further reducing fuel consumption. Available in polished stainless steel or plastic chrome, with fixing brackets and central cup with IVECO logo. Supplied in 2-piece kits.

PN	Description
1 500049989	32 mm black stainless steel wheel nut cover.
500051794	Chromed steel.
2 500050997	Chromed steel with blue sky details.
3 93162600	Steel with embossed IVECO.
500050252	Plastic alpine white.
500050281	Plastic chromed.
4 500050479	Plastic white.
500050258	Plastic black.
5 2994362	Plastic chromed.
2994354	Front steel wheel trims - 22.5" (10 holes).
2994355	Rear steel wheel trims - 22.5" (10 holes).
6 500025732	Front plastic wheel cup - 22.5" (10 holes).
500025733	Rear plastic wheel cup - 22.5" (10 holes).



Style meets performance.

1 Chromed logo & trims.

Material: Stainless steel.

The kit contains:

- 1 IVECO logo
- 4 Trims

2 IVECO side cabin sign. Set of 2 pieces of side cabin sign, silk-screen printing UV- resistant.

3 4 5 Decals. The stylish decals, guaranteed waterproof and UV- resistant, enhance the character of the vehicle.

PN	Description
1 500051780	Chromed logo & trims.
2 500049919	IVECO side cabin sign.
500049934	Kit EDGE variant 1 Silver & Titanium.
3 500049935	Kit EDGE variant 2 Silver & Gold.
500049937	Kit RACE variant 1 Red & Silver.
4 500049938	Kit RACE variant 2 Titanium & Gold.
500049936	Kit BAND variant 1 Silver & Gold.

Distinctive
visibility.







To maximize the efficiency.

A set of accessories realized to provide illumination on the roads or in the working area giving personality and guaranting safety. Electronic horns and reflectives tools allow your vehicle to be always recognizable.

Specially shaped to emphasise the design of the front of the vehicle and give it a rugged look.

1 Front Light Bar. With flashers cable for 4 lights, 4 fixed type holders, 2 strobes. Stainless steel, 60 mm.

2 Sidebars. With LEDs 5 amber LEDs. WB 3800MM. Stainless steel, 60 mm.

3 Spoilerbar. 5 white + 2 amber LEDs. Stainless steel, 60 mm.

4 Spoilerbar. 7 white + 2 amber LEDs. Stainless steel, 60 mm.

	PN	Description
1	500051088	Front Light Bar.
2	500051093	Sidebars.
3	500051086	Spoilerbar 5 + 2.
4	500051087	Spoilerbar 7 + 2.



1



2



3



4



5



6

To maximize the efficiency.

1 SKY LIGHT High roof. With LED cable for 6 lights, 6 fixed type holders, 5 white LEDs. Stainless steel, 60 mm.

2 SKY LIGHT High roof. With LED cable for 4 lights, 4 clamp type holders, 3 white + 2 amber LEDs. Stainless steel, 60 mm.

3 SKY LIGHT High roof. With LED cable for 4 lights, 4 clamp type holders, 3 white + 8 amber LEDs. Stainless steel, 60 mm.

4 SKY LIGHT High roof. LED cable for 6 lights, 6 clamp type holders. Stainless steel, 60 mm.

5 SKY LIGHT Low roof. Cable for 4 lights, 4 fixed type holders. Stainless steel, 60 mm.

6 Roofbar. Specially shaped to emphasise the design of the front of the vehicle and give it a rugged look.

Superior bullbars:

Diameter 60 mm, with support for 4 additional lights.

Opt. 79454: predisposition for the LED lights with an in cab controller.

PN	Description
1 500051090	SKY LIGHT High roof 6 + 5.
2 500051089	SKY LIGHT High roof 4 + 3 + 2.
3 500051092	SKY LIGHT High roof 4 + 3 + 8.
4 500051091	SKY LIGHT High roof 6 + 6.
5 500051094	SKY LIGHT Low roof 4 + 4.
500051790	Electropolished stainless steel superior bullbar.
6 500049940	Stainless steel black superior bullbar.



1



2

To maximize the efficiency.

1 Backlighted Fleet Sign. The new LED backlighted cover **designed for the shape of the NEW S-WAY roof** enhances fleet identity with the customized logo.

The kit contains:

- LED stripes
- Lightweight ABS cover
- Sticker with IVECO logo
- Stainless steel matt chromed sticker

Opt. 79454: predisposition for the LED bar and the fleet sign.

2 Backlighted Logo IVECO. IVECO logo, at night the aesthetics of the vehicle will completely change.

- Stainless Steel AISI 304 Outdoor
- Backlit Ice light
- Led group with 2835 24 Volt
- Kit voltage stabilizer

PN	Description
1 500051765	Backlighted fleet sign.
2 500051672	Backlighted Logo IVECO.



1



2



3



4



5



6

To maximize the efficiency.

- 1 LED spotlight. Luminator LED.
- 2 LED spotlight. Luminator LED.
- 3 Hybrid spotlight. Luminator Chromium / Celis.
- 4 LED spotlight. Rallye 3003 LED.
- 5 Hybrid spotlight. Rallye 3003 / Celis.
- 6 LED spotlight. Jumbo LED.

PN	Description
1 500051164	Round LED spotlight, 12/24 V, crystal-clear diffuser lens, light diffuser colour: transparent, 800 mm cable.
2 500051165	Round LED spotlight, 12/24 V, crystal-clear diffuser lens, light diffuser colour: transparent, 800 mm cable.
500051166	Round Halogen/LED hybrid spotlight, 12/24 V, crystal-clear diffuser lens, light diffuser colour: transparent, RH/LH mounting.
3 500051167	Round Halogen spotlight, 12/24 V, crystal-clear diffuser lens, light diffuser colour: transparent, RH/LH mounting.
500051168	Round Halogen/LED hybrid spotlight, 12/24 V, crystal-clear diffuser lens, light diffuser colour: transparent, RH/LH mounting.
4 500051169	Round LED spotlight, 12/24 V, crystal-clear diffuser lens, light diffuser colour: transparent, 800 mm cable.
500051170	Round Halogen spotlight, 12/24 V, crystal-clear diffuser lens, light diffuser colour: transparent, RH/LH mounting.
5 500051171	Round Halogen/LED hybrid spotlight, 12/24 V, crystal-clear diffuser lens, light diffuser colour: transparent, RH/LH mounting.
500051172	Round Halogen/LED hybrid spotlight, 12/24 V, crystal-clear diffuser lens, RH/LH mounting.
6 500051173	LED spotlight, 12/24 V, 800 mm cable with open cable termination.



1



2



4



3

To maximize the efficiency.

- 1 **Halogen spotlight.** Jumbo 320.
- 2 **Hybrid spotlight.** Jumbo 320.
- 3 **Led light.**
- 4 **Led working lamps.** The LED has reduced energy consumption, compared to the consumption of halogen lamps is reduced by 50%.

PN	Description
1 500051174	Halogen bulb spotlight, 12/24 V, crystal-clear diffuser lens, RH/LH mounting.
2 500051175	Hybrid Halogen/LED bulb spotlight, 12/24 V, crystal-clear diffuser lens, RH/LH mounting.
500050661	Full LED additional light, 700 lm, with 7" diameter, black cover/chromed surround.
500050662	Full LED additional light, 700 lm, with 9" diameter, black cover/chromed surround.
3 500050663	Full LED additional light, 1200 lm, with 9" diameter, black cover/chromed surround.
500050664	Full LED additional light, 1200 lm, with 9" diameter, chromed cover/chromed surround.
500051877	New Full LED squared additional light, 140 x 67 mm, 2000 lm, black cover.
500051722	LED 10/30 V 1000 lm flood metal 0,5 m. Open end 110 x 110 x 40 mm.
4 500051723	LED 10/30 V 1800 lm flood plastic 0,5 m. Open 105 x 105 x 27 mm. 12 W.
500051724	LED 10/30 V 2000 lm flood plastic 0,5 m. Open 110 x 94 x 68 mm. 10 W.



1



2



3



4

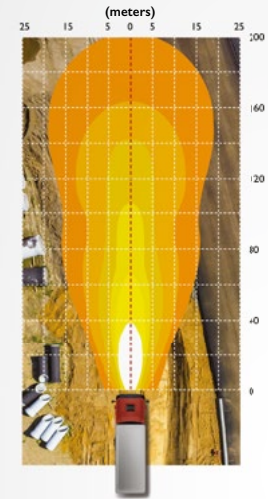


5

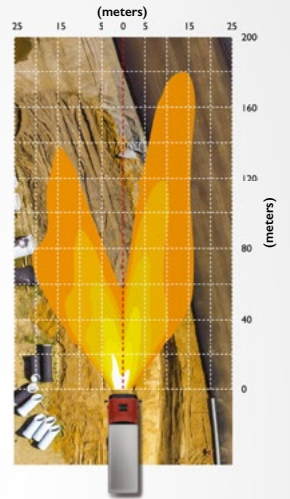


6

CORRECT



INCORRECT



Off-road illumination. To ensure optimum visibility when working with your headlamps on, your headlamps need to be positioned correctly such as to provide an intense and precise source of luminous power – this is the only way to guarantee your comfort and safety while also taking the stress out of driving.

For the light installation check your local legislation.

To maximize the efficiency.

1 LED working lamp.

2 LED beacons. IVECO accessories LED beacons guarantee optimum lighting at all times (ECE R65 R10 - 12/24 V).

3 Rotating halogen projector light. KL 7000.

4 Flashing LED projector light. K-LED 2.0 F.

5 Flashing LED projector light. K-LED Blizzard.

6 Flashing LED projector light. K-LED Rebelution.

PN	Description
1 500051560	LED Working Lamp, 600 lm, 12/24 V.
500051725	Orange LED flashing / three screws fixing.
2 500051726	Orange LED flashing / rod fixing flexible.
500051727	Orange LED flashing / magnetic fixing base / spiral cable with integrated socket.
3 500051176	Rotating halogen projector light, 24 V, yellow, spiral cable with flat plug connector.
4 500051177	Flashing LED projector light, 12/24 V, yellow/white, 1450 mm cable with open cable termination.
5 500051178	Flashing LED projector light, 12/24 V, yellow/white, 150 mm cable, with Flachstecker plug connector.
6 500051179	Flashing LED projector light, 12/24 V, yellow/white, 150 mm cable, with flat plug connector.



1



2



3



4

To maximize the efficiency.

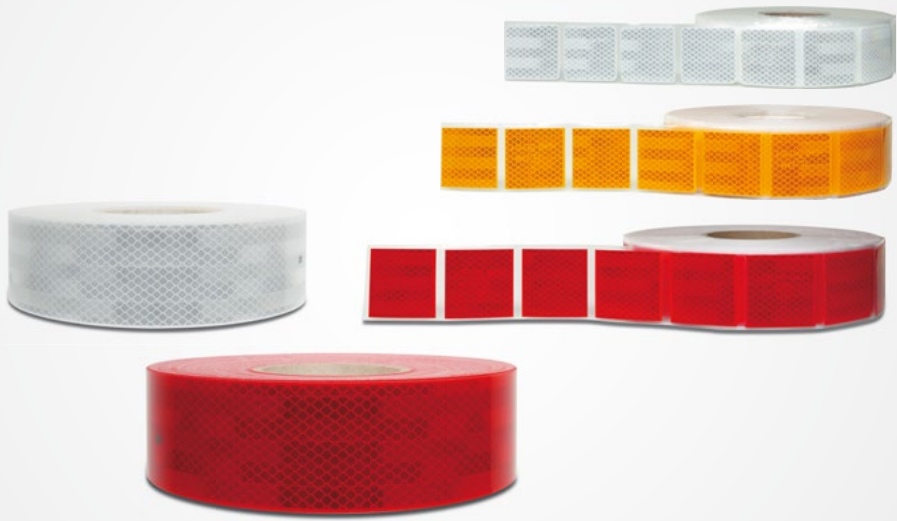
1 Compressed air horn. Complete with built-in solenoid valve 24 V. Length: 19 cm.

2 Compressed air horn with 2 tones. Complete with: spoiler, 24 V solenoid valve and mount gasket. Length 50 cm - 60 cm.

3 Compressed air horn for articulated trucks. Complete with 24 V solenoid valve and spoilers. Length: 55-60 cm, powerful sound with high and low-tone horns, matt black.

4 Compressed air horn for articulated trucks. Complete with 24 V solenoid valve and spoilers. Length: 55-60 cm, powerful sound with high and low-tone horns.

PN	Description
1 500025951	Compressed air horn.
2 500025949	Compressed air horn with 2 tones.
3 500050356	Compressed air horn for articulated trucks (matt black).
4 500051880	Compressed air horn for articulated trucks.

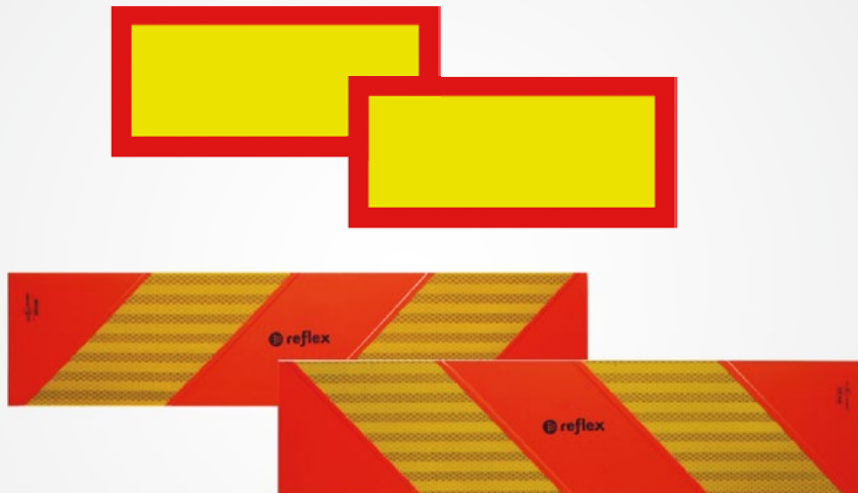
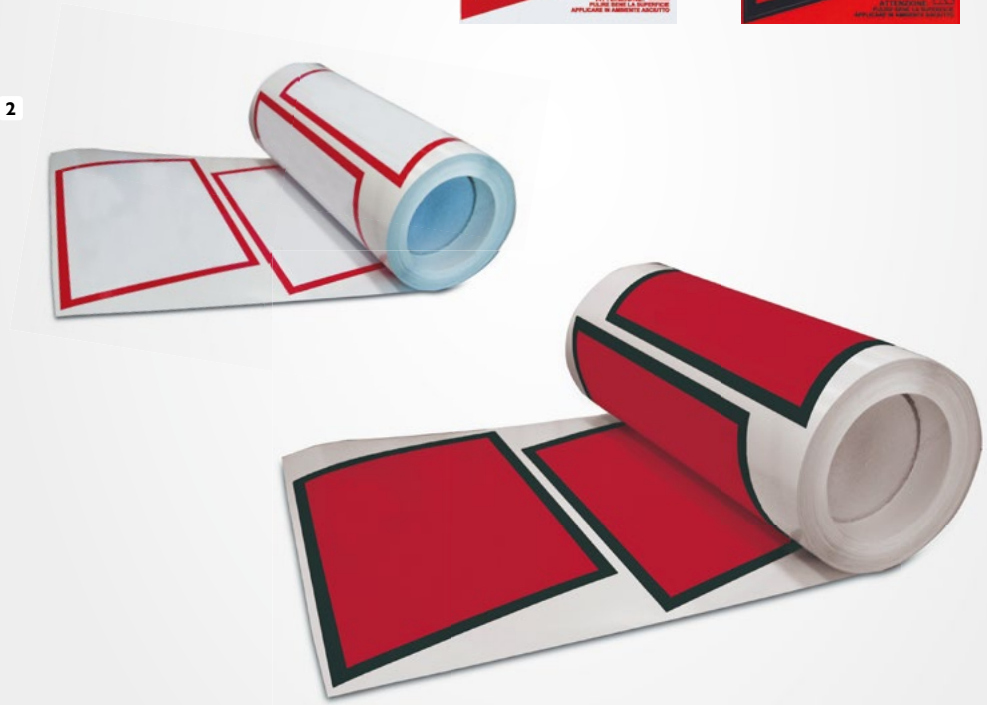


1

2



3



To maximize the efficiency.

1 Retro-reflective strips.

2 Stripes.

3 Panels.

PN	Description
500025214	White for rigid surfaces.
500025216	Red for rigid surfaces.
1 500025211	White for soft surfaces.
500025212	Yellow for soft surfaces.
500025213	Red for soft surfaces.
500050633	White stripes – transport of third parties goods 120x307 mm – ITALY 24 pcs.
500050634	White stripe – transport of third parties goods 160x307 mm – ITALY 12 pcs.
2 500050630	Red stripe – transport of in-house goods 120x307 mm – ITALY 24 pcs.
500050631	Red stripe – transport of in-house goods 160x307 mm – ITALY 12 pcs.
500050635	Stripe roll – transport of third parties goods 307 mm x 25 m – ITALY.
500050632	Stripe roll – transport of in-house goods 307 mm x 25 m – ITALY.
3 2994173	Kit of fluorescent panels.
2994174	Kit of fluorescent panels for trailers.

Always safe
& efficient.





IVECO

IVECO

IVECO S-WAY



1



2



3

4



Wherever safe.

Increase your vehicle safety helping to prevent accidents with a complete rear camera system. And guarantee high performances thanks to fuel anti-tefth tools, monitoring tyre pression and aerodynamic kit.

1 Complete rear vision kit. The KIT contains all the accessories necessary for the installation of the rear view camera, including the 20 m video cable and a bracket with double-sided adhesive area for installing the monitor on the dashboard.

Technical specifications:

Extra Slim 7" monitor

- TFT/LCD 7" monitor
- 480x232 pixel resolution
- PAL/NTSC system - 16:9, 4:3 format
- Touch keys
- Image rotation 90°/180°/270°/360°
- Viewing angle 60° horizontal / 60° vertical
- Colour/ contrast/ brightness adjustment
- 1 audio input
- 2 video inputs
- IR transmitter for IR DUAL headphones
- Remote control included
- 12 V power supply
- Dimensions: 17.8x11.8x2 cm
- Automatic rear view camera activation

Rear view camera

- Brightness 0.5 Lux
- CMOS 1/3" infrared sensor
- NTSC system
- Mirror image
- 960x576 pixel resolution
- 30 fps frame rate
- 110° viewing angle
- IP68 waterproof
- Dimensions 7.5 x 7.6 cm
- 20 m video cable
- 12V

2 Tyre Pressure Monitoring System. The TPMS ensures that the temperature and pressure status of the tyres are always under control.

The kit contains:

- 6 valve-cap sensors
- Display L56 x W118 x H20 mm
- 1 repeter
- 7 dustproof covers

Characteristics:

- Pressure range: 0-12 Bar / 0-174 PSI
- Visual and audible warning
- Self-testing for each power-on
- Intelligent sleeping mode for power saving

3 Heated rear camera.

The kit contains:

- Professional heated and waterproof camera IP69K, with a viewing angle of 170°. Automatic activation for anti fog and defrosting
- Plug and play connectors, cables

4 Emergency and first aid kit.

The kit contains:

- Black clutch bag with IVECO screen printing
- Hi-vis vest
- Compact Euro micro triangle
- Dynamo torch
- First aid kit certified DIN13164
- Breaker hammer
- Gloves
- Ice-scraper

PN	Description
1 500052043	Rear vision kit.
2 500051083	Tyre pressure monitoring system.
3 500051896	Heated rear camera.
4 500049939	Emergency and first aid kit.



1



2



3



4



5

1 Complete front/rear vision kit. The KIT contains all the accessories necessary for the installation of the rear view camera, including the 20 m video cable and a bracket with double-sided adhesive area for installing the monitor on the dashboard.

Technical specifications:

Extra Slim 7" monitor

- TFT/LCD 7" monitor
- 1080x480 pixel resolution
- PAL/NTSC system - 16:9 format
- Touch keys
- Image rotation 90°/180°/270°/360°
- Angle/tilt adjustable with bracket
- Colour/contrast/brightness adjustment
- 1 audio input
- 2 video inputs
- IR transmitter for IR DUAL headphones
- 12 V power supply
- Automatic rear view camera activation

Infrared rear view camera

- Automatic/manual activation
- Brightness 0.5 Lux
- CDM 1/4"
- NTSC system
- Mirror/normal image
- 960x576 pixel resolution
- 25 fps frame rate
- 130° viewing angle
- IP67 waterproof
- Dimensions 1.4 x 1.4 cm
- 6 m video cable
- 12 V

3 Radar blind spot.

4 Mirror digital camera.

2 Complete rear vision kit. The KIT contains all the accessories necessary for the installation of the rear view camera, including the 20 m video cable and a bracket with double-sided adhesive area for installing the monitor on the dashboard.

Technical specifications:

Extra Slim 7" monitor

- TFT/LCD 7" monitor
- 1080x480 pixel resolution
- PAL/NTSC system - 16:9 format
- Touch keys
- Image rotation 90°/180°/270°/360°
- Angle/tilt adjustable with bracket
- Colour/contrast/brightness adjustment
- 1 audio input
- 2 video inputs
- IR transmitter for IR DUAL headphones
- 12 V power supply
- Automatic rear view camera activation

Infrared rear view camera

- Automatic/manual activation
- Brightness 0.5 Lux
- CDM 1/4"
- NTSC system
- Mirror/normal image
- 960x576 pixel resolution
- 25 fps frame rate
- 130° viewing angle
- IP67 waterproof
- Dimensions 1.4 x 1.4 cm
- 6 m video cable
- 12 V

5 Radar blind spot + Mirror digital camera. This device warns the driver of an approaching vehicle in the dark, and is particularly effective when another vehicle is overtaking or the driver needs to change lanes. The sensors detect the presence of other vehicles using 79GHz microwave radar and transmit the information to the displays which are to be installed in the vehicle, the latter programmed to give

- Visual warning when other vehicles are in the blind spot zone
- Visual and acoustic warning when the turn light is switched on to change lanes; both with stop vehicle and with vehicle in motion.

PN	Description
1 500052047	Kit front/rear camera + monitor.
2 500052048	Kit rear camera + monitor.
3 500052017	Radar blind spot
4 500052018	Mirror digital camera.
5 500050390	Radar blind spot + Mirror digital camera.



2

3



Wherever safe.

- 1 Ladder holder.** Made of stainless steel, you can easily load and unload your ladder with the utmost speed and safety.
- 2 Fuel security and safety device.** The **fuel security devices** are proven to **resolve any haulier fuel security issues**, protecting your fuel.
- 3 Caps with keys.** For protecting the fuel and urea in the tank.

PN	Description
1 500051895	Ladder holder.
500050869	Tank safe impregnable aluminium.
2 500050870	Tank safe standard aluminium.
500050871	Tank safe standard aluminium for rigid bodies.
500050986	Bayonet fitting fuel cap 2-wing 60 mm.
3 500050987	Bayonet fitting urea cap 2-wing 60 mm.



1



2



3



Tachograph.

Electronic instrument with functional features, safety and accuracy that allow significant progress in matters of:

- Road safety
- Regulatory compliance
- Improvement of working condition for drivers
- Easy management for transport companies.

1 DLK PRO download key. The DLK Pro Downloadkey S key is the ideal tool for downloading and storing the mass memory data of the 4.0 tachograph and the second generation driver card. It also works with current driver cards and tachographs up to generation 3.0. The device is equipped with an integrated chip card reader fast downloading of the driver-cards.

Characteristics:

- USB 2.0 interface, Plug (Type A), data download via 6-pin serial interface, SD™ card or SDHC™ card slot, integrated card reader
- TFT color touch-screen display, resolution 320x240 px, 262,000 colors
- 2 GB memory
- Storage temperature: 20 °C
- Operating temperature: -20 +70 °C
- IP 3X security class
- Supply voltage: Connection via USB 2.0 interface: 4.75 - 5.25 V / 100-500 mA, Connection via 6-pin interface: 9 - 30 V / max. 40 mA

3 SmartLink. DTCO SmartLink is the fastest and easiest way to communicate with the digital tachograph using popular and modern smartphones with Android operating system. It is a Bluetooth® USB key to apply into the interface of the DTCO. After activating the communication with the smartphone by opening the free App, you can access a number of useful features for the driver.

2 DLK PRO TIS-Compact S. DLK Pro TIS-Compact is the complete solution for unloading, archiving and managing tachograph data, particularly suitable for owner-operators and small fleets. It is already suitable to operate both with 4.0 tachigraphers and second generation cards. Through DLK Pro TIS-Compact, the mass memory data of the digital tachograph and the driver card are downloaded quickly and safely and are transferred to the PC for evaluation, archiving and printing, through the integrated software.

Characteristics:

- USB 2.0 interface, Plug (Type A), data download via 6-pin serial interface, SD™ card or SDHC™ card slot, integrated card reader
- TFT color touch-screen display, resolution 320x240 px, 262,000 colors
- 2 GB memory
- Storage temperature: 20 °C
- Operating temperature: -20 +70 °C
- IP 3X security class
- Supply voltage: Connection via USB 2.0 interface: 4.75 - 5.25 V / 100-500 mA, Connection via 6-pin interface: 9 - 30 V / max. 40 mA

PN	Description
1 500051958	DLK Pro Downloadkey.
2 500051959	DLK Pro TIS-Compact S.
3 500050979	SmartLink.



1



2



3



4

Wherever safe.

1 Fire extinguisher.

2 Battery charger. A powerful 24 V battery charger, capable of delivering 14 A to charge batteries up to 300 Ah, and to maintain counters loads up to 500 Ah.

3 GPS locator. The GPS locator Mario is a **next-generation satellite protection system**. It allows you to locate the vehicle through an App, **displaying the position directly from the phone or computer screen**.

General characteristics:

- Internet location: allows to check the routes taken, ability to report the kilometers traveled, fuel consumed, the speed limits exceeded and to control the stopping and driving times
- SAT Alarm: in case of theft, a message will be sent with the geographical location

4 Anti-theft nuts.

Material: Alkaline zinc plated.

The kit contains:

- 4 nuts and a tightening key.

	PN	Description
	93162986	Fire extinguisher 2 kg - ITALY.
1	500050624	Fire extinguisher 6 kg - ITALY.
	2994544	Fire extinguisher 2 kg - GERMANY.
	2994545	Fire extinguisher 6 kg - GERMANY.
2	500025749	Battery charger.
3	500051469	GPS Locator.
4	500025710	Anti-theft nuts M22 x 1.5 mm.



1



2



3



4



5



8



6



7

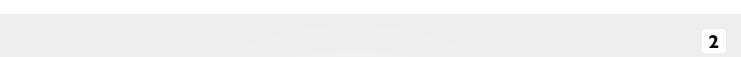
Tool boxes.

Made of **polished, matte** or **flower-embossed** stainless steel, the boxes have plastic Europlex latches. They fit perfectly in the most diverse types of vehicles thanks to the **wide choice of customisations**.

PN	Description
500050577	Thermoplastic case 400 x 350 x 400 mm.
500050578	Thermoplastic case 500 x 350 x 400 mm.
500050579	Thermoplastic case 600 x 450 x 470 mm.
1 500050580	Thermoplastic case 700 x 450 x 470 mm.
500050581	Thermoplastic case 800 x 450 x 470 mm.
500050582	Thermoplastic case 1000 x 500 x 470 mm.
500050583	Thermoplastic case 1000 x 500 x 650 mm.
500050200	Matte stainless steel box 500 x 350 x 400 mm 1.2 mm thick.
2 500050201	Matte stainless steel box 600 x 400 x 470 mm 1.2 mm thick.
500050202	Matte stainless steel box 500 x 350 x 400 mm 1.5 mm thick.
3 500050204	Oval flower-embossed stainless steel hand washing can - 285 x 245 x 400 mm 1 mm thick - 25 L.
4 500050205	Oval flower-embossed stainless steel hand washing can - 170 x 370 x 400 mm - 25 L.
5 500050206	Flower-embossed stainless box can - 10 L.
500050211	Polished stainless box 800 x 500 x 500 mm.
6 500050212	Polished stainless box 1000 x 500 x 500 mm.
500050215	Brackets for all INOX boxes range.
500050213	Flower-embossed stainless box 800 x 500 x 500 mm.
7 500050214	Flower-embossed stainless box 1000 x 500 x 500 mm.
8 500050208	Transpallet stainless steel box.



1



2



Wherever safe.

1 Door windows deflectors.

2 Aerodynamic kit high roof.

PN	Description
1 500051767	Deflectors - set of 2 pieces (for right and left windows).
5802485544	Adjustable roof spoiler.
5802485510	Lower right side spoiler.
5802485491	Lower left side spoiler.
2 5802485477	Upper left side spoiler.
5802485466	Upper right side spoiler.
500051897	Mounting kit.

A world of technology
and connectivity.



IVECO





The future on board.

Connectivity on the new IVECO S-WAY has been designed to help the driver operate effortlessly and efficiently, and to support the fleet manager by optimising the vehicle's uptime, fuel efficiency and Total Cost of Ownership.

1 Android DAB + / GPS / Bluetooth® multimedia system. Full Europa truck cartography "TomTomMap" including customized cover; fixing kit; plug & play power supply wiring for IVECO S-Way; cabling for PAB antenna diversity DAB + OEM

2 Smartphone support. Tailor-made dashboard bracket with USB socket to recharge your smartphone, tablet or TomTom which can be easily and safely positioned in the dedicated holder.
Opt. 72945: Connectivity Box + cradle predisposition (Mobile / Tablet / Driver Linc).

3 Hi-Vision 2.0. Matchig the new audio & video system guarantees innovation, technology and ease of use, creating the ideal environment for relaxation time.

4 Hi-Sound 24 V 2.0.

5 Portable navigator 7" Truck EU.

- 7" high-resolution touch screen
- Dimensions: 188 x 114 x 12 mm
- TomTom™ Europe truck maps for 43 countries, including Russia, with free upgrade

- within 30 days from first connection
- Bluetooth® handsfree with simultaneous navigation and calls
- Automatic audio/video input for rear view camera
- Audio output
- Integrated eco-traffic light system
- Dedicated truck software: by setting dimensions such as the weight of the vehicle and the type of material to be transported, it will calculate the best route possible, taking into consideration the width of roads, height of tunnels and bridge weight limits for heavy vehicles

6 IVECO Dab "PLUS" radio.

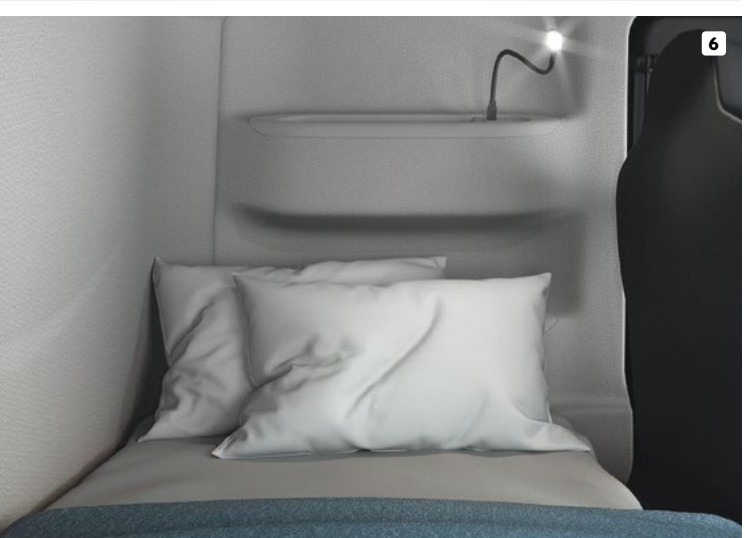
- Removable face plate with LCD display
- Front SD card and USB port
- Bluetooth®
- CD/MP3/WMA player
- 4 Channels x 40 W MAX
- iPod connection

PN	Description
1 500051961	Multimedia system.
500051786	Smartphone cradle, tablet holder, TomTom (drivelinc) holder with USB socket integrated in the bracket.
2 500051899	Qi Cradle for Smartphone to recharge inductively your device.
3 500051861	Monitor 24", USB and HDMI socket, antenna, plug and play cables and mounting kit.
4 500051878	1 subwoofer, plug and play cables, amplifier, fixing bracket.
5 500049944	Portable Navigator 7" TRUCK EU.
6 500051960	IVECO Dab "PLUS" radio.

Living comfort.







More enjoyable travel.

1 Microwave oven. Microwave oven with intuitive and robust design integrated ceramic plate easy to clean interior LED light. Check OPT predisposition on vehicle configurator.
Opt. 73175: 4-din top shelf with microwave predisposition.

2 USB LED Reading Light.

3 Air blower. Air blower kit for cab interior with an innovative and ergonomic design.
The kit contains:

- Air gun
- Universal coupling for under seat mounting, spiral cable

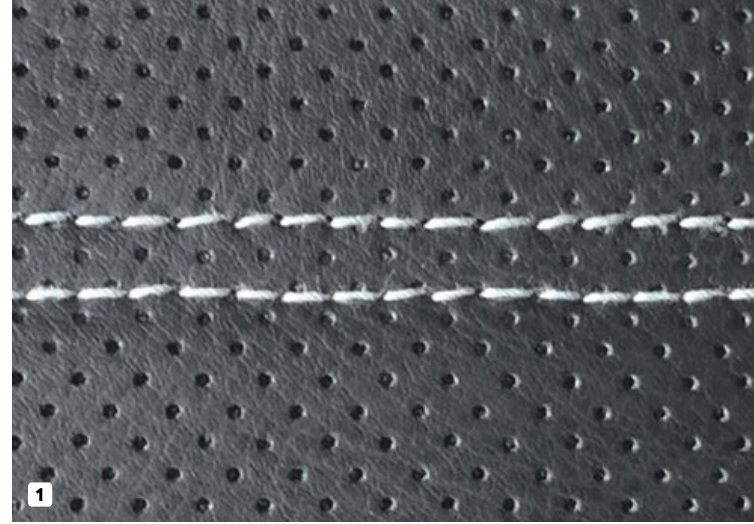
4 Coffee machine.

5 Rubbish can. Ergonomic rubbish can with branded metallic support to be hang to the fridge handle.

6 Sleeping set.

7 Table. Passenger side table.

PN	Description
1 500051789	Microwave oven.
500049931	Microwave mounting kit.
2 500051762	LED courtesy reading light with USB socket.
3 500036271	Air blower.
4 500049941	New generation truck machine for coffee pads 140 W, 24 V.
5 500051898	Rubbish can.
500049930	Ergonomic topper in light memory foam.
6 500049929	Cover topper.
500051810	Pillow.
7 500051643	Passenger side table.



Seat covers.

The lines of seat covers are designed to meet all needs and have a working environment tailored to your personal needs.

1 SKY-HIGH line. Black faux leather with micro-perforated banded backrest and customized with IVECO embroidered logo.

2 ACTIVE line. Black Tecnosilk fabric, electrowelded centre panel with diamond pattern insert, top seat faux leather with IVECO embroidered logo.

3 EVERLASTING line. Tech. Black fabric, side plush anthracite faux leather, backrest in jersey, top seat in grey jersey customized with IVECO embroidered logo.

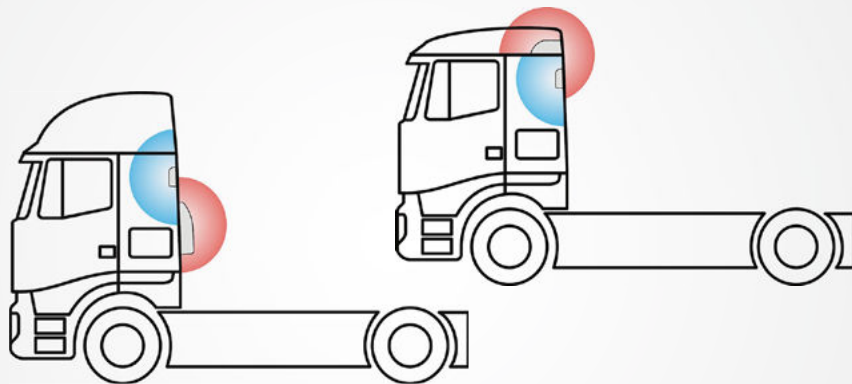
PN	Description
500049926	Driver's seat standard.
1 500049927	Driver's Hi-comfort seat.
500049928	Passenger seat.
500049920	Driver's seat standard.
2 500049921	Driver's Hi-comfort seat.
500049922	Passenger seat.
500049923	Driver's seat standard.
3 500049924	Driver's Hi-comfort seat.
500049925	Passenger seat.



1



2



3

4



Fabric mats.

Developed to match the new flooring, they are customized with a woven IVECO logo. Double-fixing system guarantees they stay in place to avoid potentially hazardous situations.

1 A SKY-HIGH line. In velour Twist tufted dark grey fabric, anthracite-colour nubuck edging and lead color stitching. Silver IVECO logo and red steering wheel logo stitched and gel backing.

1 B ACTIVE line. In velour Magnum tufted dark grey fabric, anthracite-colour nubuck edging and lead color stitching Black IVECO logo and red steering wheel logo stitched and granular backing.

1 C EVERLASTING line. In Endurance grey fabric, black fabric edging, red steering wheel logo stitched and granular backing.

2 Rubber mats set. For protecting the cab interior. Acid resistant, washable and resistant to changing shape. With a raised edge to prevent dirt spillage.

3 External parking cooler. The stationary vehicle air conditioning achieves the maximum thermal comfort. It works silently and cleanly with the engine off, lowering the temperature and reducing humidity in the way that only true air conditioners can, leaving the roof hatch free.

4 Truck care kit. Cosmetic detergents for cleaning your vehicle. Professional line, technological formulation.

The kit contains:

- Shining Body 250 ml to clean windows, dashboard, steering wheel
- Perfect Interior 250 ml to seat cover fabric and mats
- Clean Air Perfume 250 ml to sanitize air
- Back to Black Tyre spray 250 ml
- Black nitrile gloves
- Microfiber cloth
- 2 white cotton grips

PN	Description
1 A 500049914	Front floor mat kit.
500049915	Mat zone night for automatic gearbox.
1 B 500049912	Front floor mat kit.
500049913	Mat zone night for automatic gearbox.
1 C 500049911	Front floor mat kit.
2 500049917	Rubber mats set.
3 500025707	Fresco Top.
500025706	Fresco Back.
4 500049933	Truck care kit.



PUBLICATION H222860IMASTER - 08/22

The information and images in this catalogue are provided as a guideline only. IVECO reserves the right to make changes for any commercial or construction reasons at any time without notice.